



RTD

MODEL ASPT-100Amb

RTD MODEL ASPT-100Amb

Wall mounted RTD for ambient aerothermic survey, air-conditioning and climatic rooms

Nominal resistances: 100 Ohm @ 0 °C, 1000 Ohm @ 0 °C, (other upon request)

TOLERANCE class according to EN60751 or DIN

Number of wires per element: 2, 3 o 4

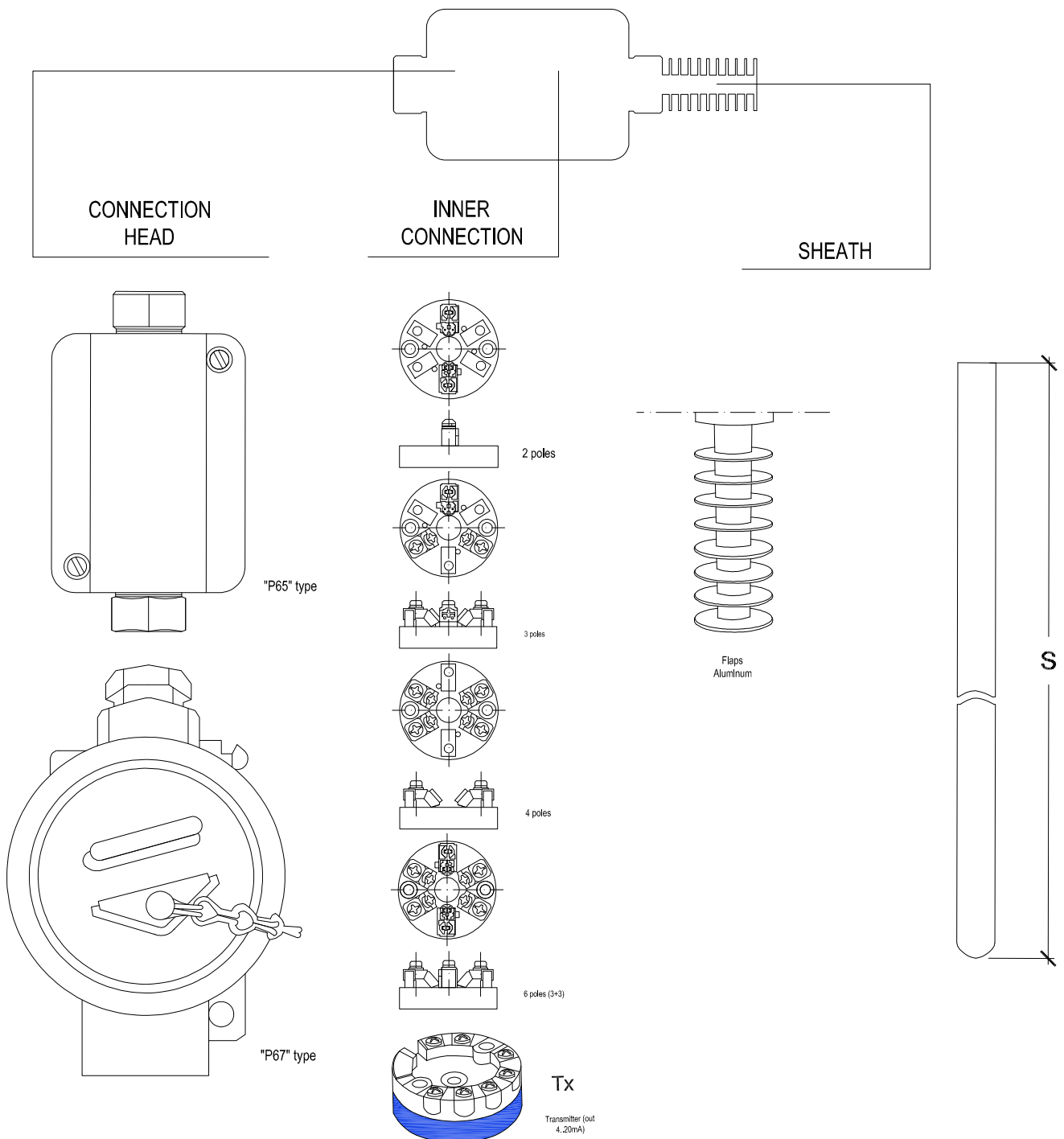
Single or Double element

Sheath in Stainless steel 316 or Aluminum with flaps or tube

SHEATH LENGTH standard 50 mm (other upon request)

Case in Thermosetting plastic IP65 or Aluminum IP67

INNER CONNECTION with ceramic terminal block or temperature transmitter (analogue output 4..20 mA), HART protocol upon request



ASPT

S50

MODEL	
Single Pt100	A
Double Pt100	2A
Single Pt1000	AM
Double Pt1000	2AM

TOLERANCE	
Class B EN60751	B
Class A EN60751	A
Class 1/3 DIN	3D
Class 1/5 DIN	5D
Class 1/10 DIN	10D

SHEATH DIAMETER/MATERIAL	
Ø 6 mm Stainless steel 316	6a16
Ø 21 mm Flaps Aluminum	21Al

SHEATH LENGTH	
mm 50	S50
Other length upon request	A

HEAD CONNECTION	
Plastic case IP65	P65
Aluminum case IP67	P67

INNER CONNECTION	
2 poles	2
3 poles	3
4 poles	4
6 poles (3+3)	6
Temperature transmitter (out 4..20mA)	Tx
HART temperature transmitter (out 4..20mA)	TH

ACCREDIA CALIBRATION	A
----------------------	---



