



RTD

MODEL ASPT-I

RTD MODEL ASPT-I

Interchangeable measuring insert for RTD

Nominal resistances: 100 Ohm @ 0 °C, 1000 Ohm @ 0 °C, (other upon request)

TOLERANCE class according to EN60751 or DIN

Number of wires per element: 2, 3 or 4

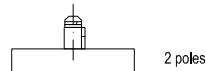
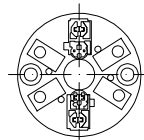
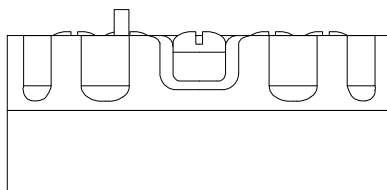
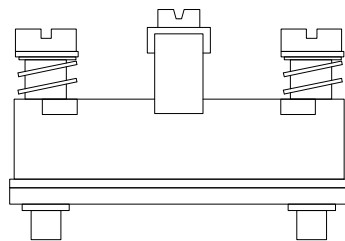
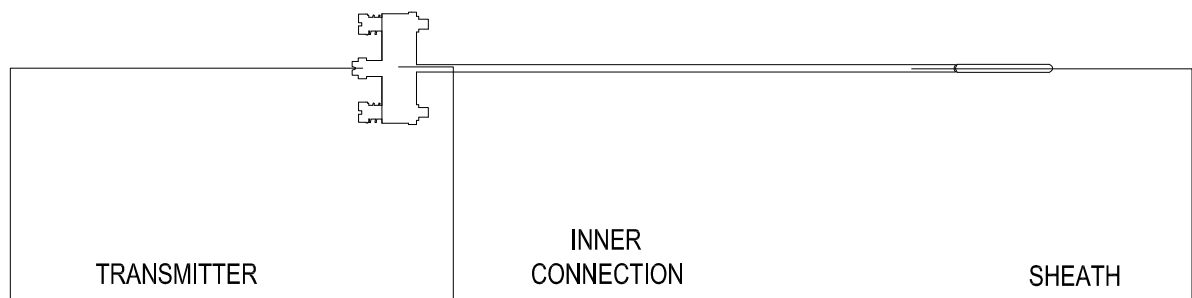
Single or Double element

Simple or Oxide mineral (MgO) insulation

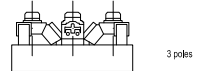
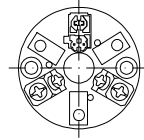
Sheath in Stainless steel 304 or 316 (other upon request)

SHEATH DIAMETER from 3 to 8 mm (other upon request)

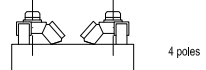
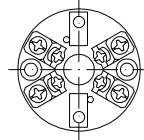
Ceramic terminal block or temperature transmitter analogue output 4..20 mA (HART protocol upon request), with springy insert



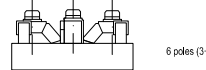
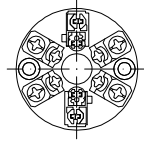
2 poles



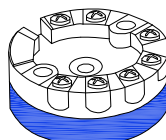
3 poles



4 poles

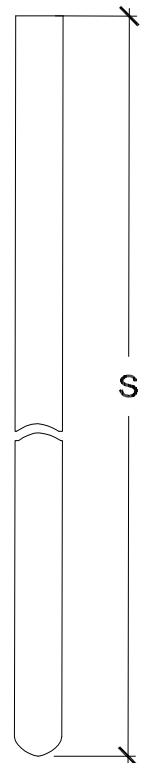


6 poles (3+3)



Tx

Transmitter (out
4..20mA)



ASPT

S

MODEL	
Single Pt100	I
Double Pt100	2I
Single Pt1000	IM
Double Pt1000	2IM

WIRES NUMBER	
2 wires	2
3 wires	3
4 wires	4
6 wires (3+3)	6

SHEATH DIAMETER	
Ø mm 3	3
Ø mm 6	6
Ø mm 8	8
Other diameters upon request	A

SHEATH MATERIAL	
Stainless steel 304	a04
Stainless steel 316	a16

TOLERANCE	
Class B EN60751	B
Class A EN60751	A
Class 1/3 DIN	3D
Class 1/5 DIN	5D
Class 1/10 DIN	10D

CONNECTION	
2 poles	2
3 poles	3
4 poles	4
6 poles	6
Temperature transmitter (out 4..20mA)	Tx
HART temperature transmitter (out 4..20mA)	TH

SHEATH LENGTH (S)	
from 30 mm (from under the support disk)	

ACCREDIA CALIBRATION	A
----------------------	---



