



Thermocouple

Model ASTC-I

Thermocouple Model ASTC-I

Interchangeable measuring insert for Thermocouple

Single or Double Thermocouple

Type K, J, T, N. Other types upon request

Tolerance Class 1 or 2 according to CEI EN60584-1, Standard or Special according to ASTM E230

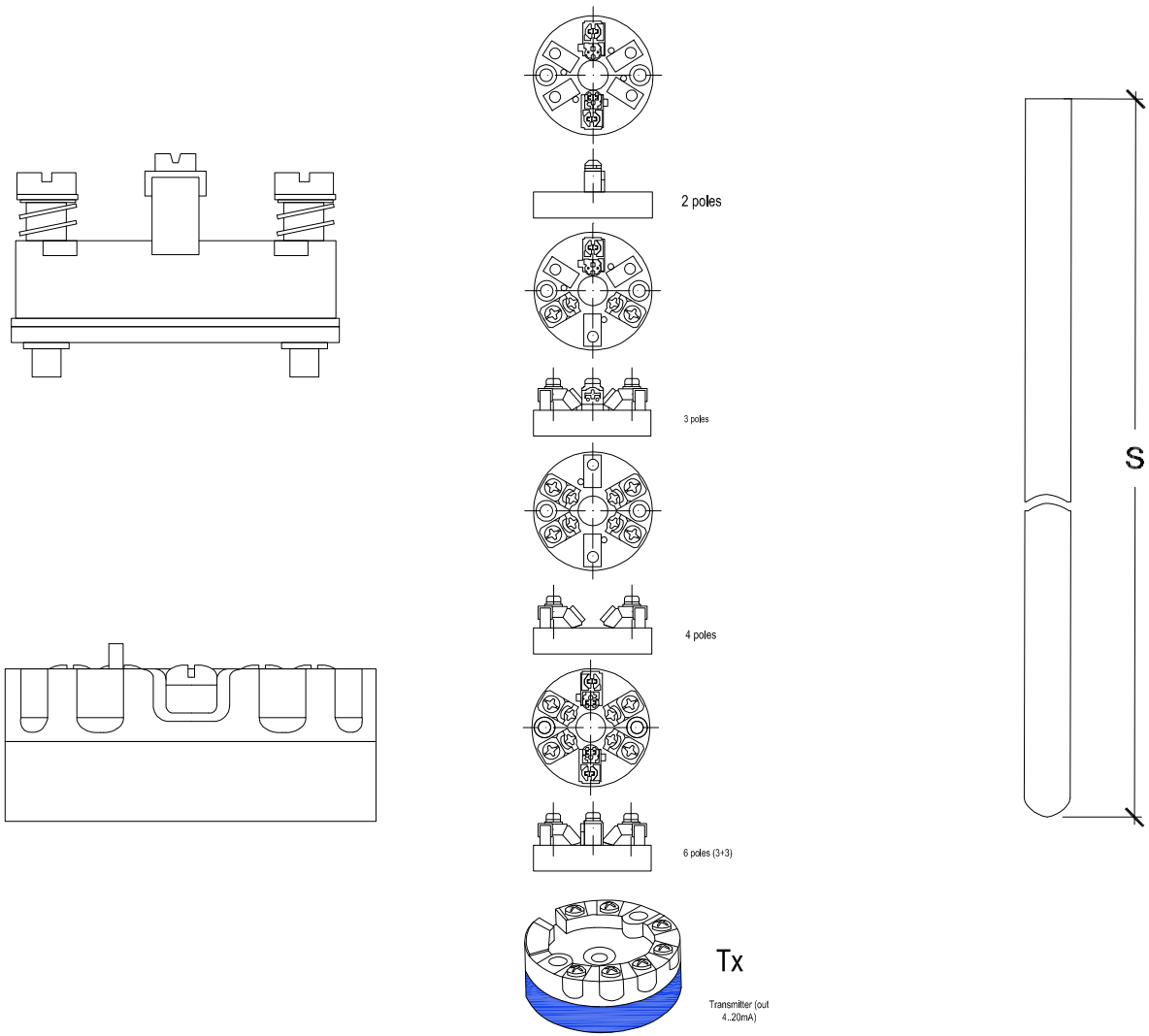
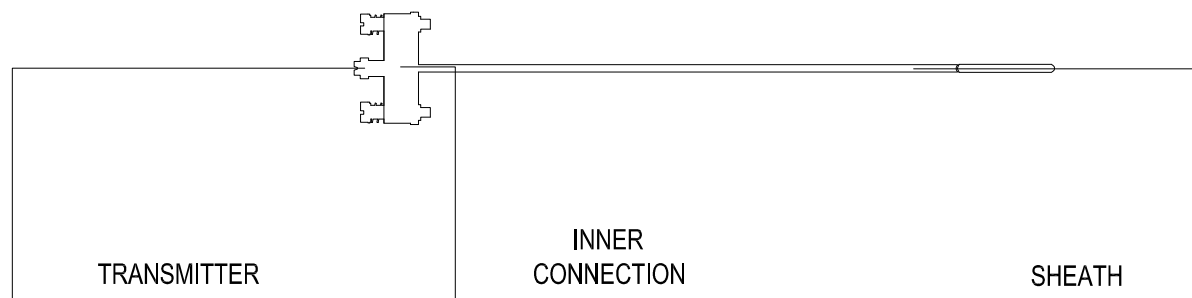
Hot joint: insulated or grounded

Simple or Oxide Mineral (MgO) insulation

Sheath material: Stainless steel 304, 310, 316, 321, Inconel600 or Microbell C

Sheath diameters from 0,5 to 8 mm

Ceramic terminal block or temperature transmitter analogue output 4..20 mA (HART protocol upon request), with springy insert



ASTC

I | | | | | | | | | | S | | | |

MODEL	
Thermocouple K type	K
Thermocouple J type	J
Thermocouple T type	T
Thermocouple N type	N
Double TC K ($\varnothing > 2$ mm)	2K
Double TC J ($\varnothing > 2$ mm)	2J
Double TC T ($\varnothing > 2$ mm)	2T
Double TC N ($\varnothing > 2$ mm)	2N
Other types upon request	A

HOT JOINT	
Insulated joint	a
Grounded joint	b

SHEATH DIAMETER	
\varnothing mm 0,5	0,5
\varnothing mm 1	1
\varnothing mm 1,5	1,5
\varnothing mm 2	2
\varnothing mm 3	3
\varnothing mm 3,17 (1/8")	3,17
\varnothing mm 4	4
\varnothing mm 4,5	4,5
\varnothing mm 6	6
\varnothing mm 8	8
Other diameter upon request	A

SHEATH MATERIAL	
Stainless steel 304	a04
Stainless steel 310	a10
Stainless steel 316	a16
Stainless steel 321	a21
INCONEL 600	i
Nicrobell C	Ni

TOLERANCE	
Class 1, CEI EN60584-1	1
Class 2, CEI EN60584-1	2
Class Special, ASTM E230	A
Class Standard, ASTM E230	B

CONNECTION	
Ceramic block 2 poles	2
Ceramic block 4 poles	4
Temperature transmitter (out 4..20mA)	Tx
HART temperature transmitter (out 4..20mA)	TH

SHEATH LENGTH (S)	
from mm 30	

ACCREDIA CALIBRATION	A
----------------------	---



